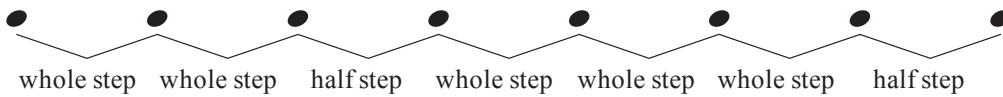


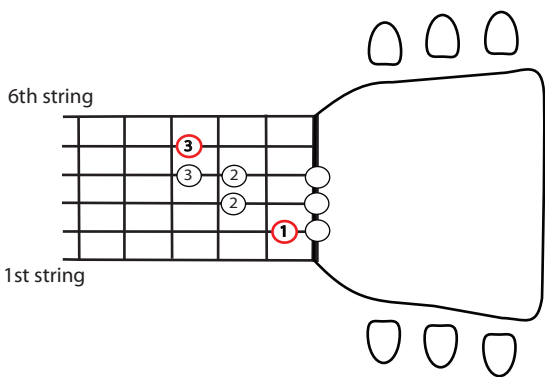
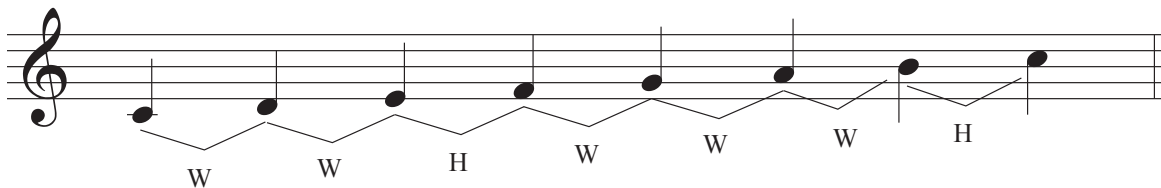
C Major Scale

Major scales each have a distinct pattern of whole steps and half steps that remains the same no matter which key. This pattern is:



On the guitar each fret is a half step. A whole step is the distance of two frets.

Below are the notes that make up the C major scale and the corresponding half step/whole step sequence.



The first fretboard diagram has the notes and fingerings that correspond to the notes on the above staff. The ledger to read the fingerings is as follows:

- Open string
- ① Index finger
- ② Middle finger
- ③ Ring finger
- ④ Pinky

Note that the tonic note “C” is circled in red.

The second diagram has all the notes of the C major scale that can be played in the first position and their fingering.

Finally the bottom diagram has the associated notes for the above two fingering diagrams.

